

SOLTIS

FT 381



Serge Ferrari 

MAIN FEATURES

- Creative freedom
- Strength and longevity
- Thermal and solar protection
- Perfect outward visibility
- Wind protection
- Lightweight, durable and 100% recyclable

APPLICATIONS

- Facades in new construction, renovation or extension
- Suitable for all types of buildings (tertiary, cultural, industrial, commercial, sports facilities, etc.)
- Large continuous surfaces or discontinuous panels
- Shading solutions



Boldness and creativity

Expressive material

Soltis FT 381, a source of creativity for asserting or transforming a building's personality through:

- a palette of 15 colours and pearl or metallic finishes,
- flexibility allowing volumes to be created for 3D effects and light play,
- graphic customization (digital or serigraphic printing).



Guaranteed aesthetic and structural durability

A comprehensive, reliable solution

Soltis FT 381 combines:

- lightness and flexibility,
- long-term resistance to climatic damage (wind, hail, UV),
- long-term dimensional stability.

Serge Ferrari offers a comprehensive solution for externally insulated, ventilated facades through a combination of Soltis FT 381 with Stamilol Color watertight breathable membranes.



Conserves visual contact with exterior

Comfort and sustainable development

Soltis FT 381 facade solution acts on:

- building thermal control: inhibits up to 81% of solar heat, depending on colours,
- light control: allows natural light to enter, while protecting against glare,
- reduction of environmental impacts: lightweight and 100% recyclable via Taxyloop®.

SOLTIS

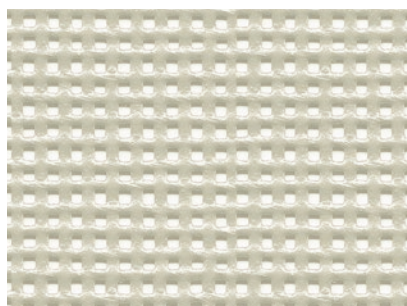
FT 381

The colours and textures represented in this document are provided as a reference only.



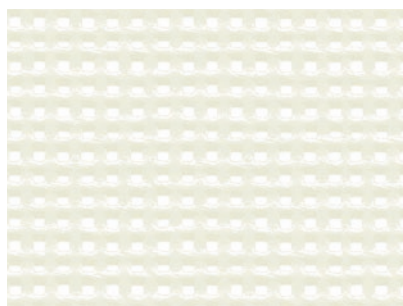
Interferential grey

381-3121



Interferential grey

381-3121



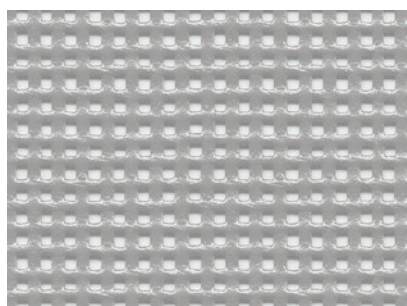
Ash-blond

381-3109



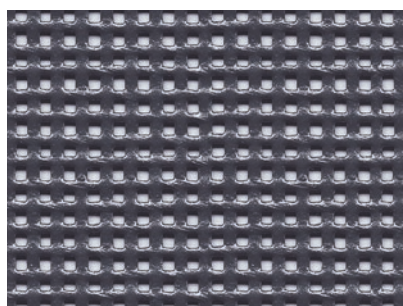
Sandy beige

381-3123



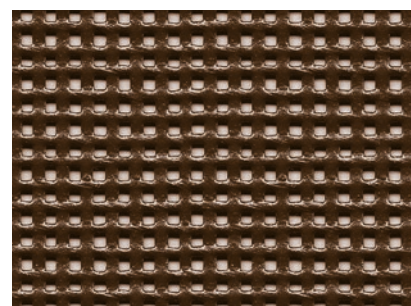
Silver-metallic

381-3128



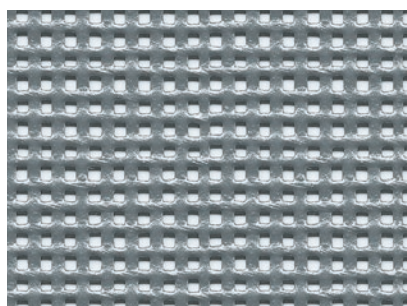
Slate

381-3113



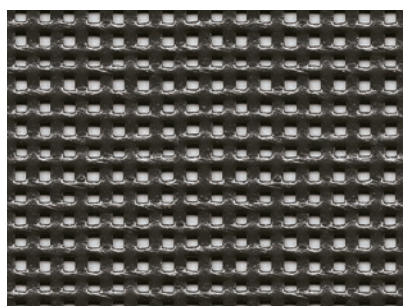
Choco

381-3108



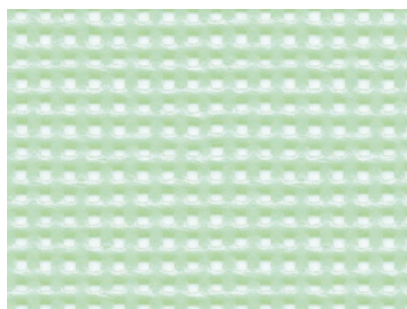
Beaten metal

381-3125



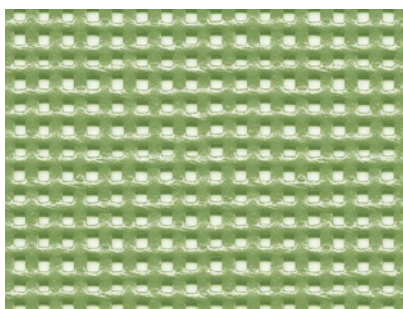
Black-cherry

381-3120



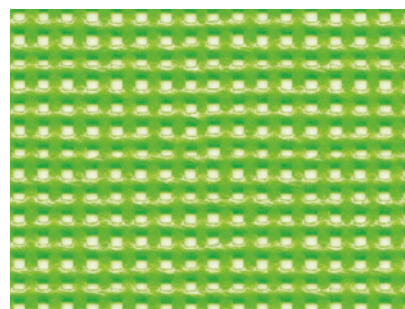
Milky green

381-3119



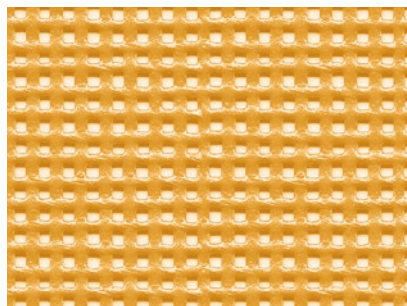
Cactus-green

381-3118



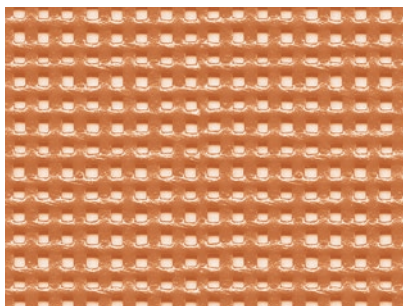
Spring-green

381-3117



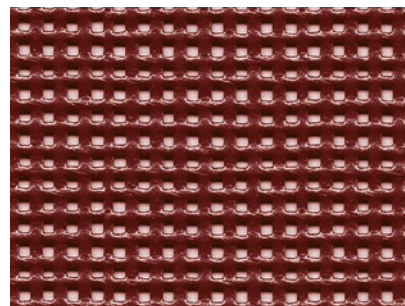
Temperament-golden

381-3124



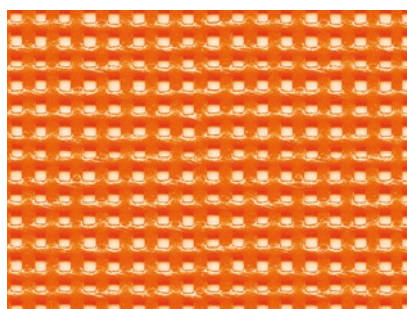
Cinnamon-copper

381-3127



Glowing-red
















381-3105



Pumpkin

381-3101

Solar and light properties (EN 14501)

	Reference	TS	RS	AS	TV n-h	g_{tot}^e
	381-3101	30	27	43	28	0.22
	381-3105	29	19	52	29	0.22
	381-3108	27	10	63	27	0.21
	381-3109	28	37	35	28	0.20
	381-3113	27	9	64	27	0.21
	381-3117	27	26	47	27	0.20
	381-3118	28	30	42	28	0.20
	381-3119	30	41	29	29	0.21
	381-3120	28	6	66	28	0.22
	381-3121	28	31	41	28	0.20
	381-3123	29	34	37	28	0.21
	381-3124	28	28	44	27	0.21
	381-3125	27	20	53	28	0.20
	381-3127	27	29	44	28	0.20
	381-3128	28	40	32	27	0.20

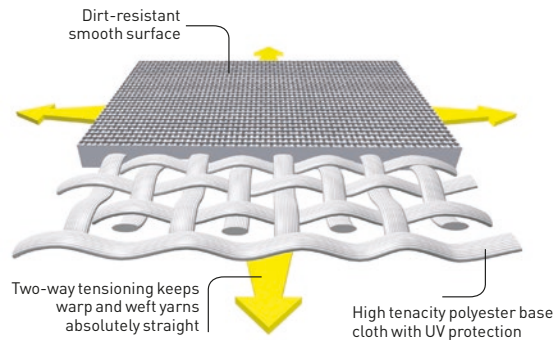
TS: Solar Transmission (%)
RS: Solar Reflection (%)
AS: Solar Absorption (%)
TS + RS + AS = 100% of incident energy

g_{tot}^e : External Solar Factor
 Type "C" glazing: insulating, slightly
 emissive double glazing in position 3
 [4 + 16 + 4; argon-filled - g=0.59 - U=1.2]
TV n-h: Normal-hemispherical visible
 light transmission (%)

Exclusive Précontraint Serge Ferrari® technology



Patented worldwide, Précontraint Serge Ferrari® technology involves keeping the membrane under tension in both directions throughout the manufacturing cycle.



Characteristics

- Exceptional dimensional stability
- Long-term strength
- Greater coating thickness at the top of the yarns
- Exceptional flatness

Benefits*

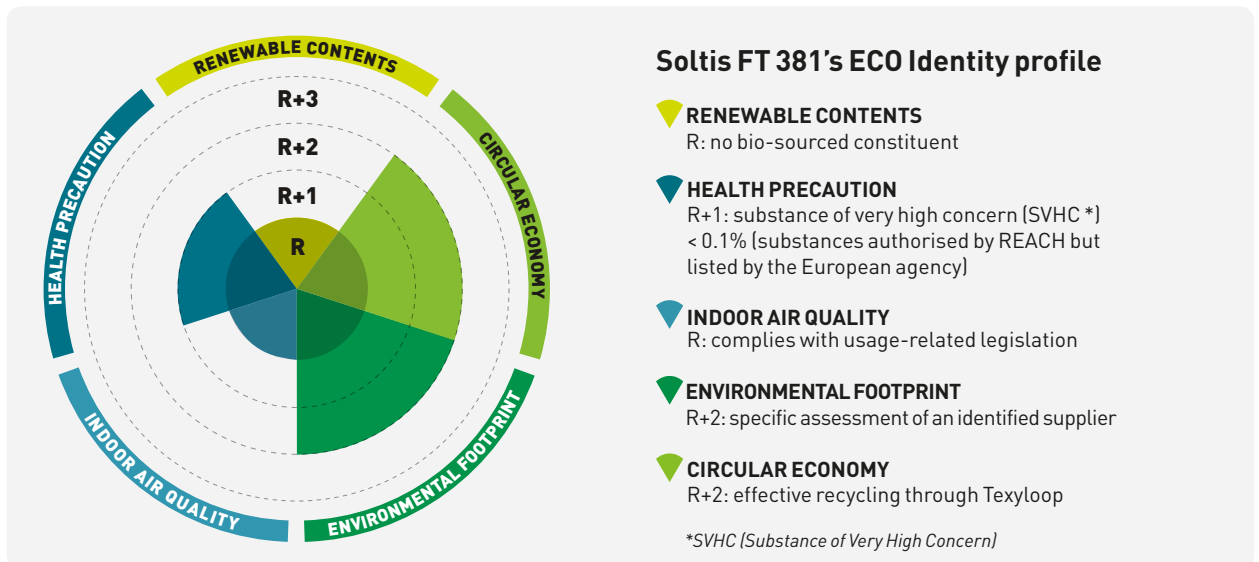
- **No deformation during installation and usage: no re-tensioning required**
- **Maintains its integrity under external aggression (wind loads, impacts, etc.)**
- **Long-term strength and aesthetic quality**
- **Smooth finish, easy upkeep**

* Benefits observed for normal product usage.

ECO IDentity, health and environmental performance

Serge Ferrari assesses the health and environmental performance of its composite materials using 5 indicators. Level “R” represents the regulations or the basic offer without regulatory requirements. Higher levels represent voluntary advances that exceed regulations.

For more information: please ask for details.



ECO IDentity complies with ISO 14021 environmental communication standard:

- exact
- verifiable
- pertinent
- not misleading

Technical properties	Soltis FT 381	Standards		
Front face	metallic or pearl finish			
Back face	matt			
Yarn	1100 Dtex PES HT			
Weight	550 g/m ²	EN ISO 2286-2		
Thickness	0,95 mm	EN ISO 5084		
Width	267 cm	(-1 mm/+1 mm)		
Physical properties				
Tensile strength (warp/weft)	330/330 daN/ 5 cm	EN ISO 1421		
Tear strength (warp/weft)	65/65 daN	EN 1875-3		
Adhesion	9 daN/ 5 cm	EN ISO 2411		
Porosity	28 %			
Extreme working temperatures	-30°C / +70°C			
Comparative analysis depending on end-of-life scenarios				
	Texyloop® recycling	Incineration	Landfill	Functional unit = 1 sqm FT 381 material
Resource depletion	0.015	0.083	0.082	kg Sb eq
Global warming	1.29	3.66	3.29	kg CO ₂ eq
Energy Consumption	43.3	80.7	80.7	Megajoules eq.
Water consumption	87	234.5	233.5	Litres
Flame retardancy				
Rating	M1/NFP 92-507 • Method 1 et 2/NFPA 701 • Class A/ASTM E84 • CSFM T19 • 1530.3/AS/NZS • Group 1/AS/NZS 3837 • G1/GOST 30244-94 • B1/DIN 4102-1 • BS 7837 • VKF 5.3/SN 198898			
Euroclass	B-s2,d0/EN 13501-1			
Management systems				
Quality	ISO 9001			
Certifications, labels, guarantees, recycling				



The technical data above are average values with a +/- 5% tolerance, variance of +/- 10% for weight given.

The buyer of our products is fully responsible for their application or their transformation concerning any possible third party. The buyer of our products is responsible for their implementation and installation in compliance with standards, codes of practice and safety regulations in force in destination countries. To ensure warranty effectiveness, refer to warranty certificate concerned available on demand.

The values quoted above represent results of tests performed in compliance with common design practices and are provided for information only to enable customers to make the best use of our products. Our products are subjects to evolutions due to technical progress, we remain entitled to modify the characteristics of our products at any time. The buyer of our products is responsible for checking the validity of the above data.

TOOLS AND SERVICES

- LCA available on request
- Document and photo libraries: www.sergeferrari.com

→ Contact

- Headquarters:
+ 33 (0)4 74 97 41 33
- Your local representative:
www.sergeferrari.com

→ TEXYLOOP®

- The Serge Ferrari operational recycling chain
- Secondary raw materials of high intrinsic value compatible with multiple processes
- A quantified response to combat depletion of natural resources

www.texyloop.com